

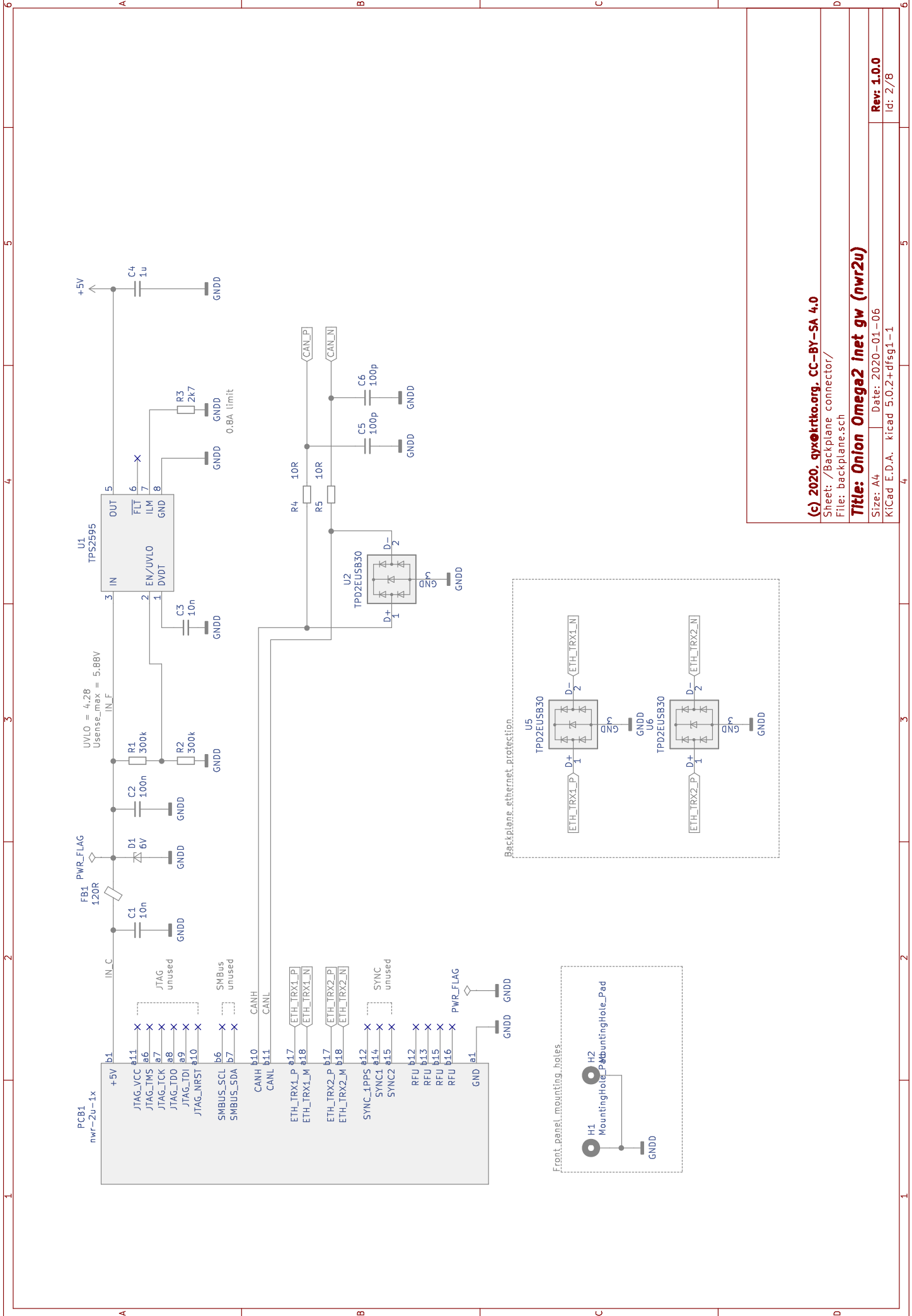
(c) 2020, gyzokrtko.org, CC-BY-SA 4.0

Sheet: /
File: onion-inet-gw-nwr2u.sch

Title: **Onion Omega2 inet gw (nwr2u)**

Size: A4 | Date: 2020-01-06
KICad: E.D.A. | kicad 5.0.2+dfsg1-1

Rev: 1.0.0
Id: 1/78



Backplane_etherenet_protection

Front panel mounting holes

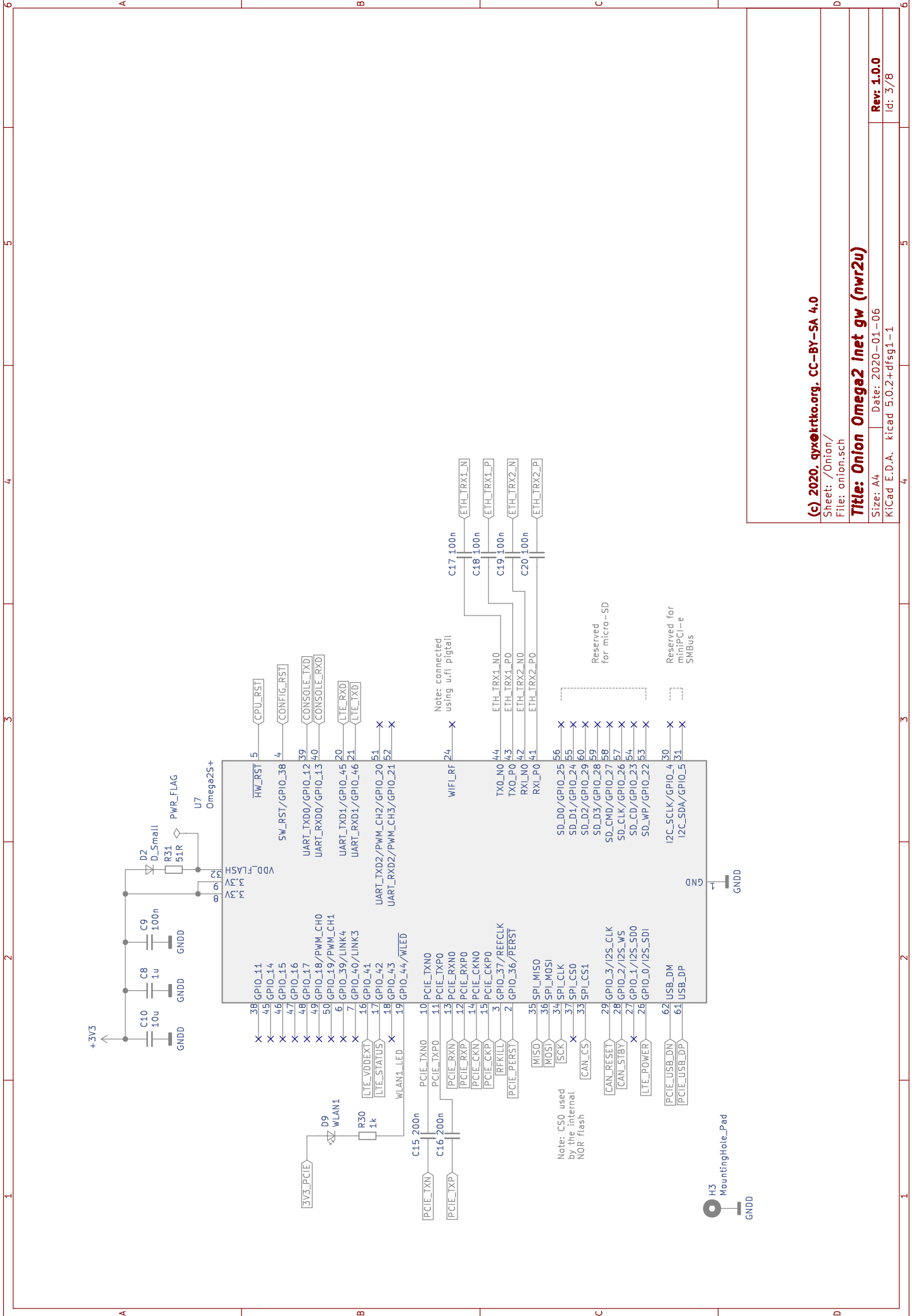
(c) 2020, gryxkrtko.org, CC-BY-SA 4.0

Sheet: /Backplane connector/
File: backplane.sch

Title: **Onion Omega2 inet gw (nwr2u)**

Size: A4 | Date: 2020-01-06
KICad: E.D.A. kicad 5.0.2+dfsg1-1

Rev: 1.0.0
Id: 2/78



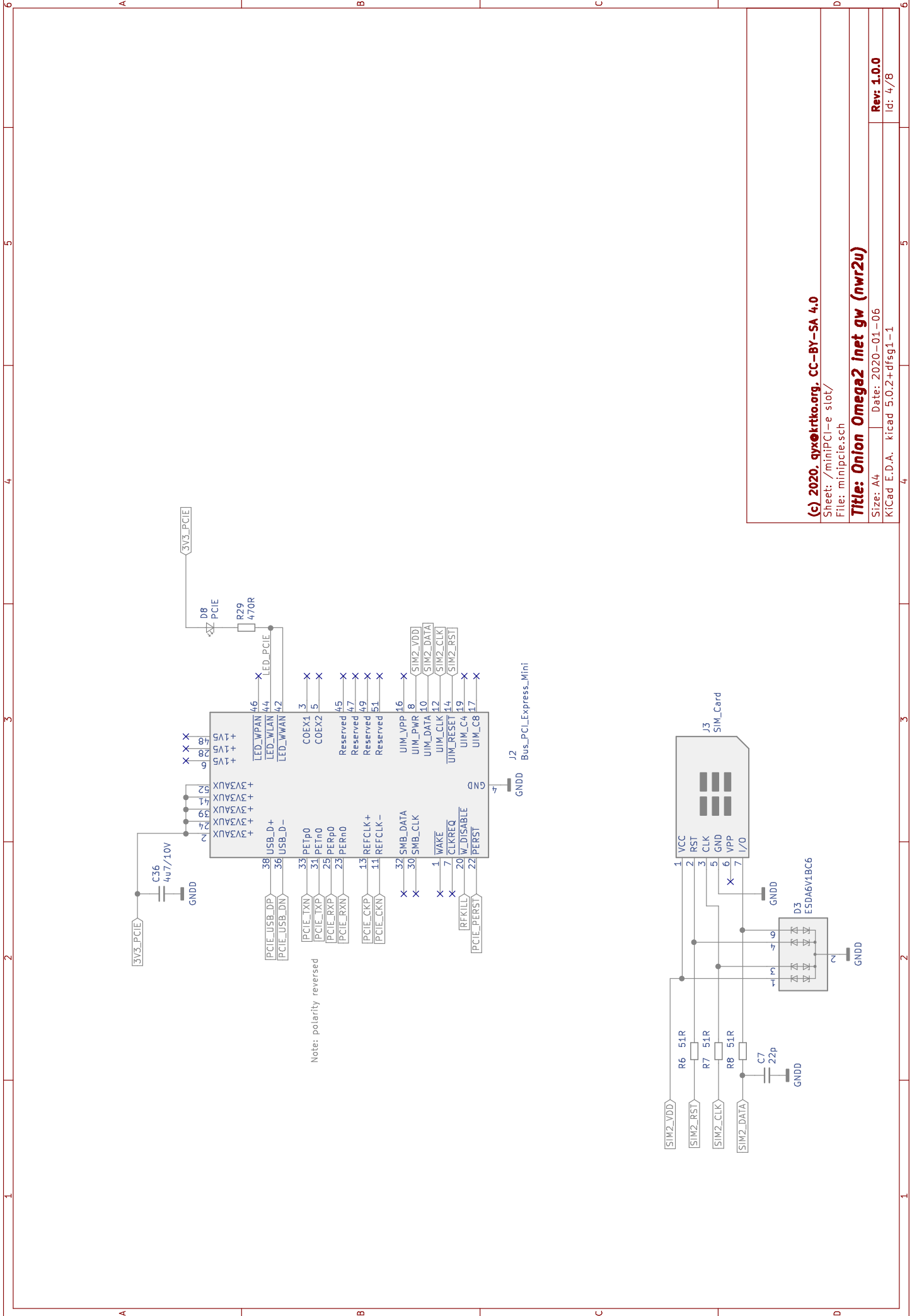
(c) 2020, qyx@rktko.org, CC-BY-SA 4.0

Sheet: /Onion/
File: onion.sch

Title: **Onion Omega2 inet gw (nwr2u)**

Size: A4 | Date: 2020-01-06 | Rev: 1.0.0
 KiCad: E.D.A. | kicad 5.0.2+dfsg1-1 | Id: 3/78



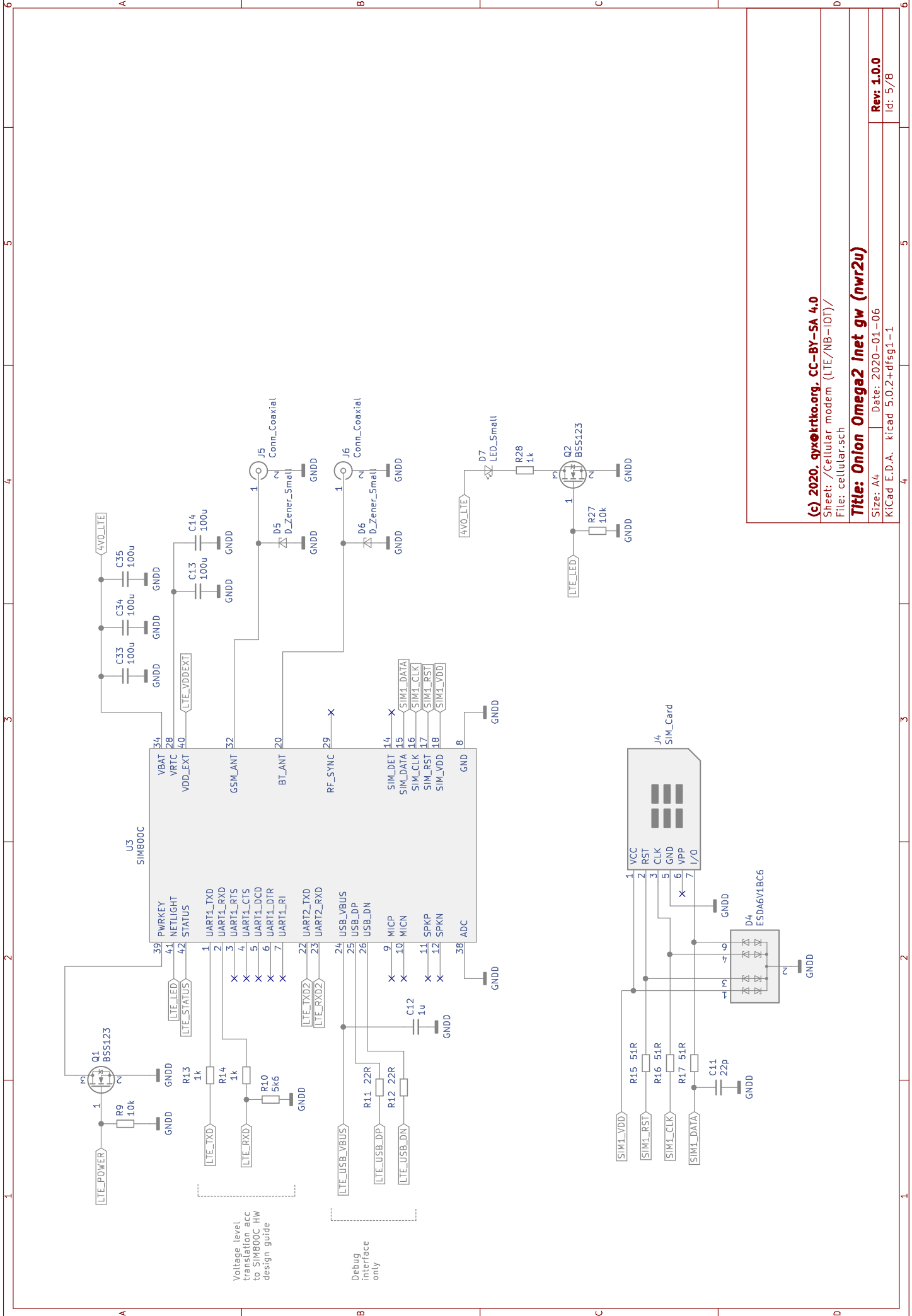


(c) 2020, oxytrkto.org, CC-BY-SA 4.0

Sheet: /miniPCI-e slot/
File: minipcie.sch

Title: Onion Omega2 inet gw (nwr2u)

Size: A4 Date: 2020-01-06
KiCad E.D.A. kicad 5.0.2+dfsg1-1 Id: 4/78



Voltage level transition acc to SIM800C HW design guide

Debug interface only

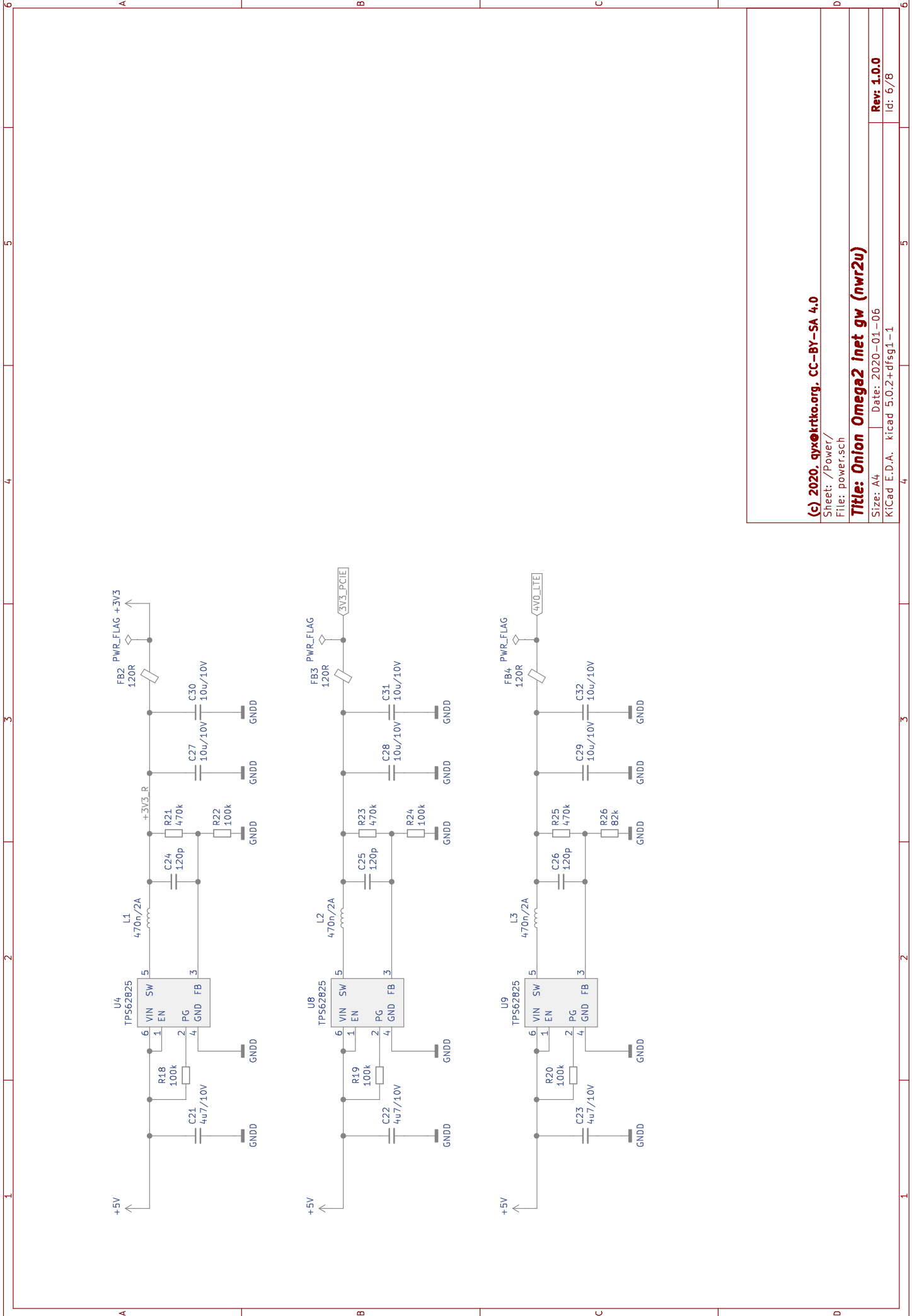
(c) 2020, oxtrkto.org. CC-BY-SA 4.0

Sheet: /Cellular modem (LTE/NB-IOT)/
File: cellular.sch

Title: **Onion Omega2 inet gw (nwr2u)**

Size: A4 | Date: 2020-01-06
KiCad E.D.A. kicad 5.0.2+dfsg1-1

Rev: 1.0.0
Id: 5/78



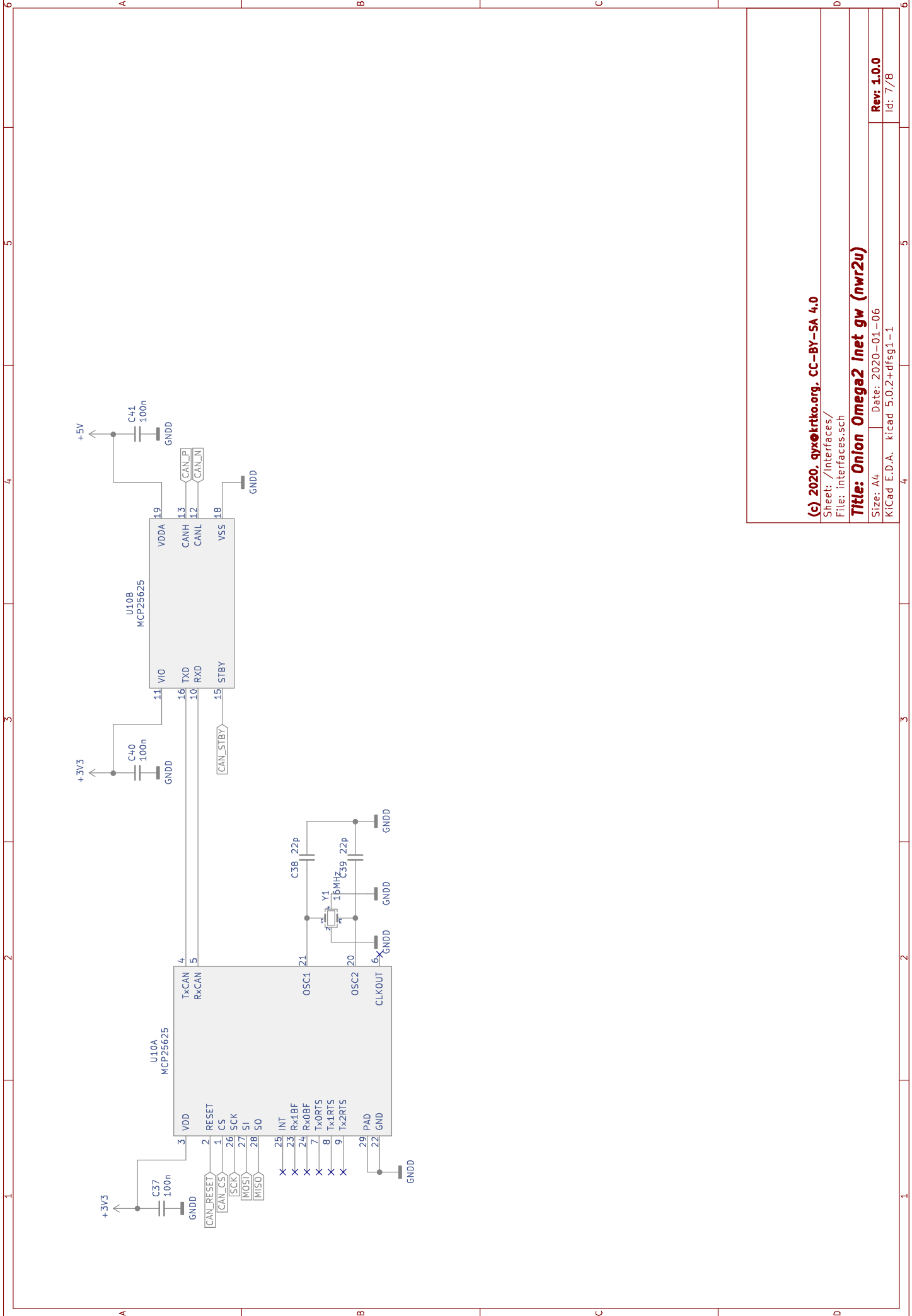
(c) 2020, qyx@krtko.org, CC-BY-SA 4.0

Sheet: /Power/
File: power.sch

Title: Onion Omega2 inet gw (nwr2u)

Size: A4 | Date: 2020-01-06
KiCad E.D.A. kicad 5.0.2+dfsg1-1

Rev: 1.0.0
Id: 6/78



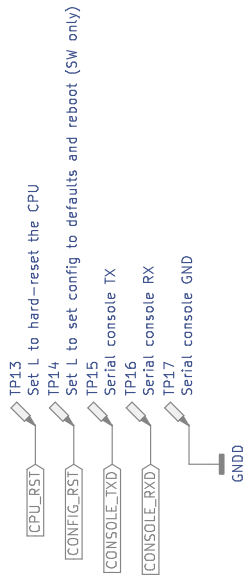
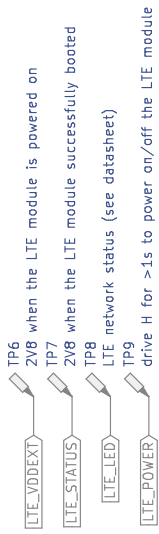
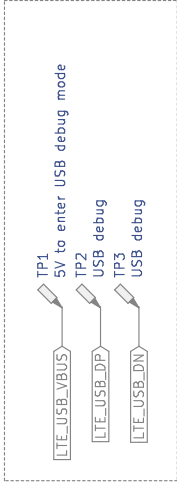
(c) 2020, qvx.electro.org, CC-BY-SA 4.0

Sheet: /Interfaces/
File: interfaces.sch

Title: **Onion Omega2 inet gw (nwr2u)**

Size: A4 | Date: 2020-01-06
KICad: E.D.A. | kicad 5.0.2+dfsg1-1 | Id: 77/8

GSM/LTE modem USB debug



(c) 2020, [gyrfalkto.org](http://www.gyrfalkto.org), CC-BY-SA 4.0

Sheet: /test pads & connectors/
File: test.sch

Title: Onion Omega2 inet gw (nwr2u)

Size: A4 Date: 2020-01-06 Rev: 1.0.0

KiCad E.D.A. kicad 5.0.2+dfsg1-1 Id: 8/78